

2201 ProLock Firmware Update

This document describes the update procedure for the 2201 ProLock



If you have any problems during updating the firmware please contact our product support:

EMEA/APAC: Tel: +49 (0) 89 996 41 – 311

America: Tel: +1 973-386-9696

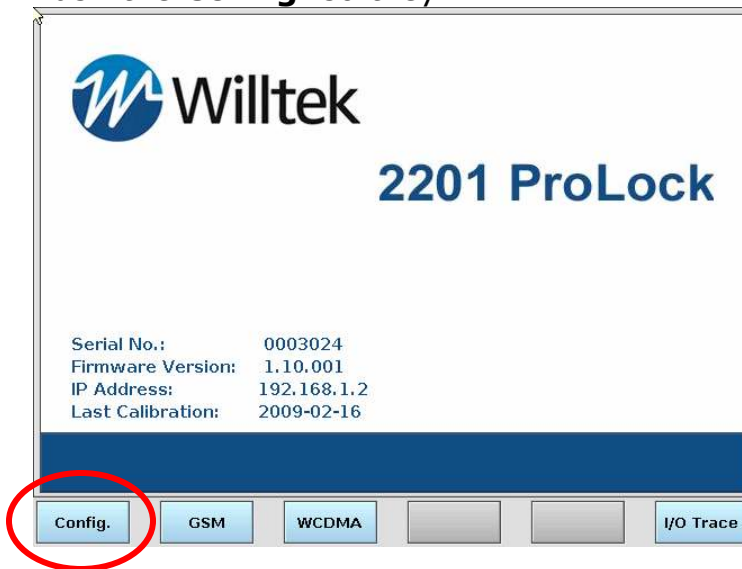
E-mail: customer.support@willtek.com

Table of content:

A	Update from version 1.10.001 to 1.20.001.....	2
B	Update from version 1.00.001 to 1.10.001 or higher.....	5
C	Patch installation for version 1.10.001 or higher.....	8

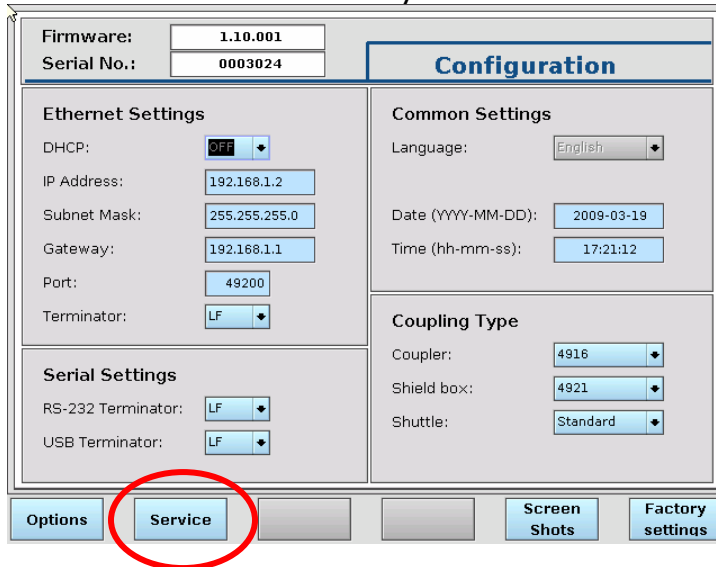
A Update from version 1.10.001 to 1.20.001

- 1) Download the actual firmware version from the Willtek website at <http://www.willtek.com/english/products/tt/2201/download>
- 2) Copy the file version.tar.gz into the root folder of the USB memory device (USB flash drive).
- 3) Connect the USB flash drive to the 2201 ProLock.
- 4) Push the **Config.** softkey.



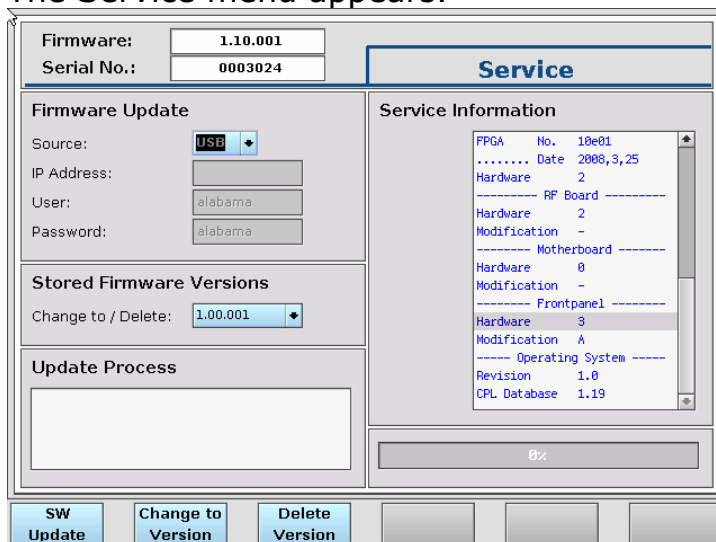
The Configuration menu appears.

5) Push the **Service** softkey.



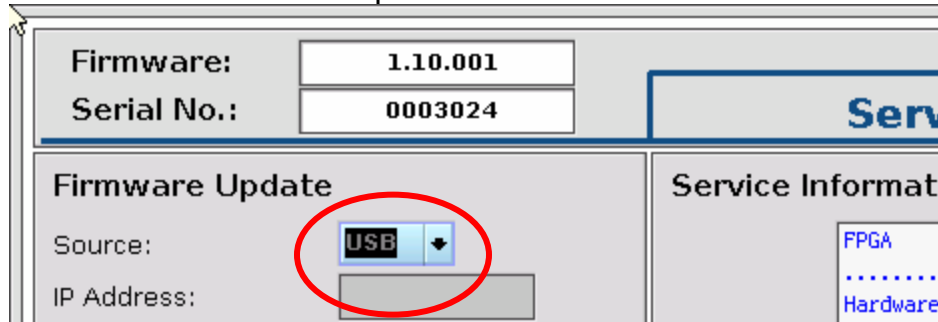
The screenshot shows the 'Configuration' menu. At the top, it displays 'Firmware: 1.10.001' and 'Serial No.: 0003024'. The menu is divided into several sections: 'Ethernet Settings' (DHCP: OFF, IP Address: 192.168.1.2, Subnet Mask: 255.255.255.0, Gateway: 192.168.1.1, Port: 49200, Terminator: LF), 'Common Settings' (Language: English, Date: 2009-03-19, Time: 17:21:12), 'Serial Settings' (RS-232 Terminator: LF, USB Terminator: LF), and 'Coupling Type' (Coupler: 4916, Shield box: 4921, Shuttle: Standard). At the bottom, there are five softkeys: 'Options', 'Service' (circled in red), 'Screen Shots', and 'Factory settings'.

The Service menu appears.

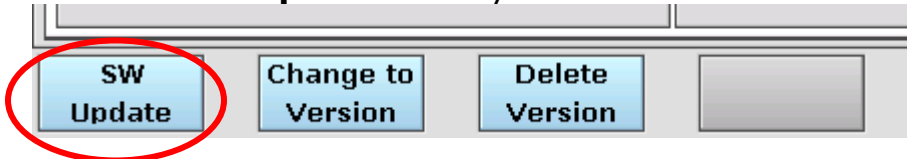


The screenshot shows the 'Service' menu. At the top, it displays 'Firmware: 1.10.001' and 'Serial No.: 0003024'. The menu is divided into several sections: 'Firmware Update' (Source: USB, IP Address, User: alabama, Password: alabama), 'Stored Firmware Versions' (Change to / Delete: 1.00.001), 'Update Process' (empty text area), and 'Service Information' (a scrollable list showing hardware details: FPGA No. 10e01, Date 2008,3,25, Hardware 2, RF Board, Motherboard, Hardware 0, Frontpanel, Hardware 3, Operating System, Revision 1.0, CPL Database 1.19). At the bottom, there are four softkeys: 'SW Update', 'Change to Version', 'Delete Version', and a blank softkey.

- 6) Ensure that the **USB** update is selected.



- 7) Push the **SW Update** softkey.



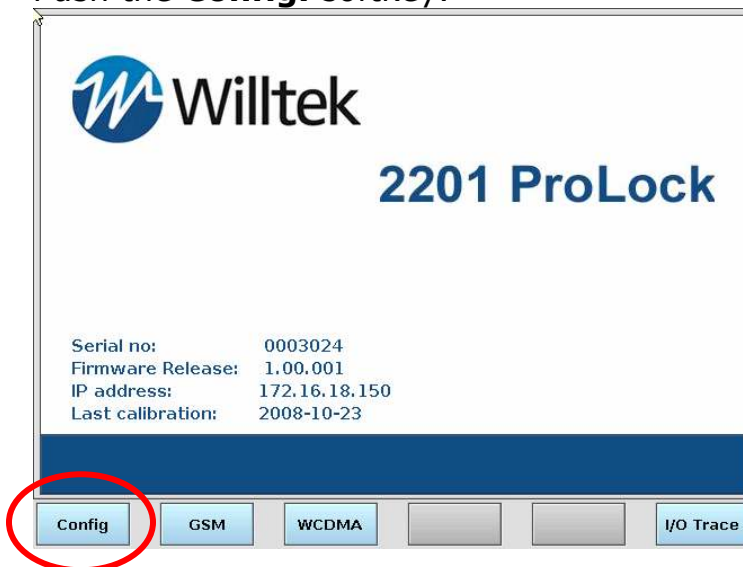
- 8) The software is loaded onto the 2201 ProLock. This may take a while.
- 9) Once the REBOOT softkey appears, please do **not** push it. Switch the 2201 manually off and on with the power switch on the front panel (left hand side)



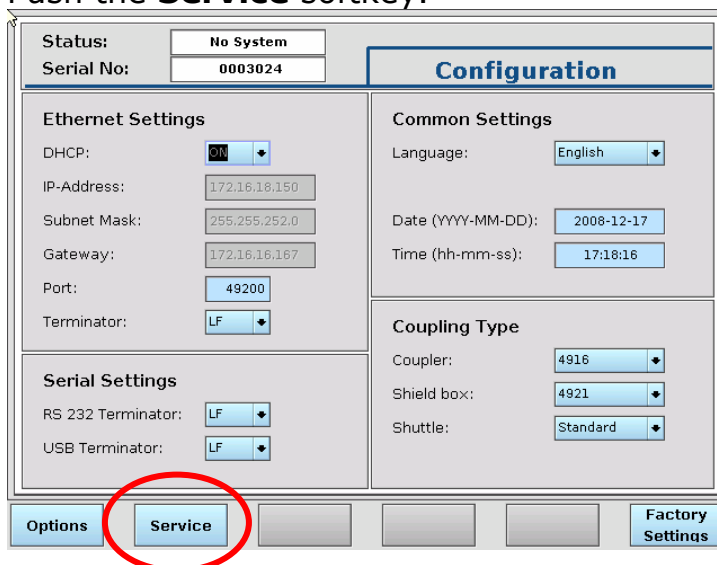
- 10) Continue with section C , the **Patch installation for version 1.10.001 or higher**

B Update from version 1.00.001 to 1.10.001 or higher

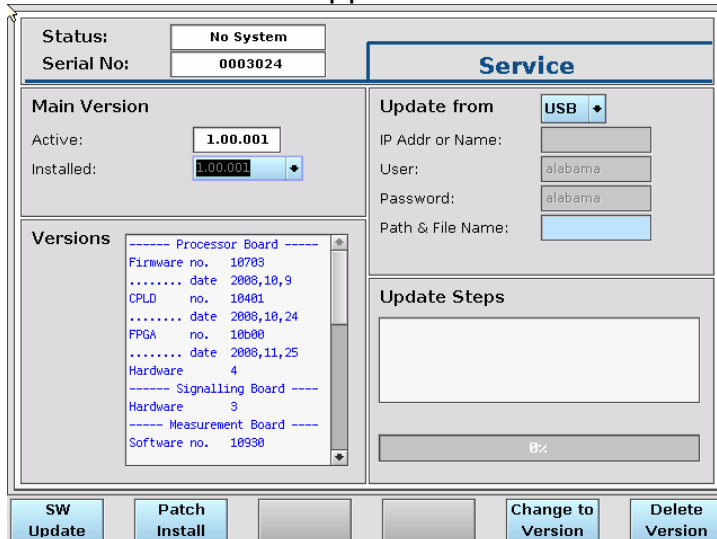
- 1) Download the actual firmware version from the Willtek website at <http://www.willtek.com/english/products/tt/2201/download>
- 2) Copy the file version.tar.gz into the root folder of the USB memory device (USB flash drive).
- 3) Connect the USB flash drive to the 2201 ProLock.
- 4) Push the **Config.** softkey.



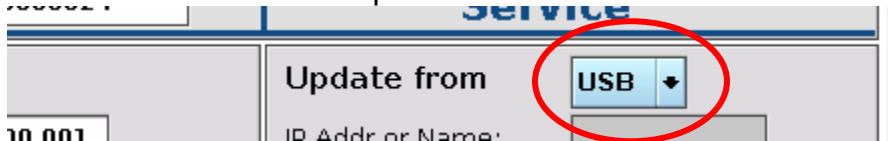
The Configuration menu appears.
Push the **Service** softkey.



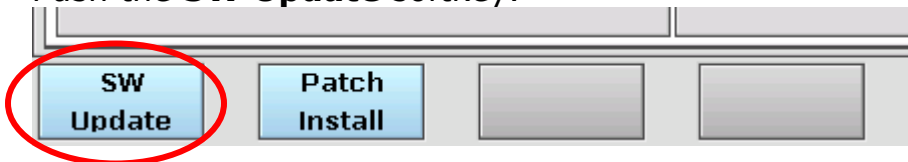
The Service menu appears.



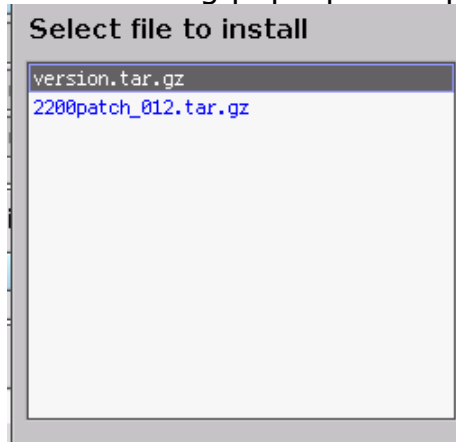
5) Ensure that the **USB** update is selected.



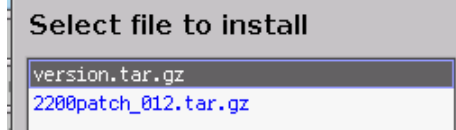
6) Push the **SW Update** softkey.



7) The following pop-up box appears:



- 8) Select the file **version.tar.gz** and push **Install**.



- 9) The software is loaded onto the 2201 ProLock. This may take a while.

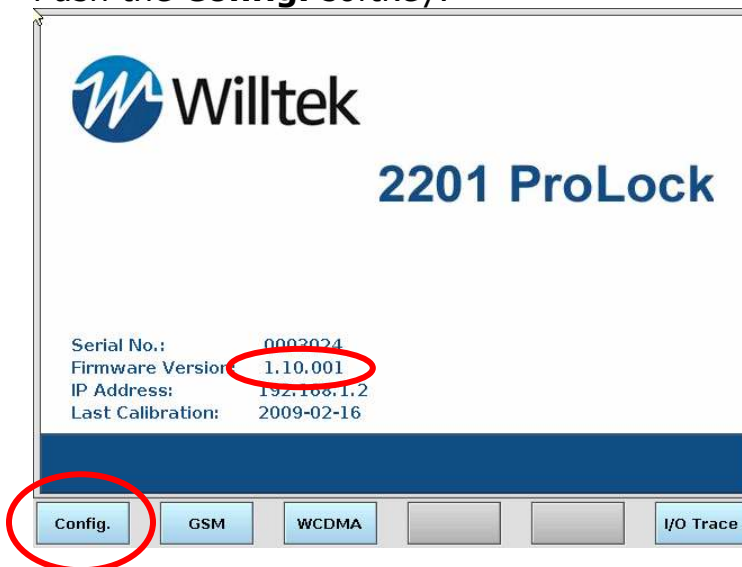
- 10) Once the REBOOT softkey appears, please do **not** push it. Switch the 2201 manually off and on with the power switch on the front panel (left hand side)



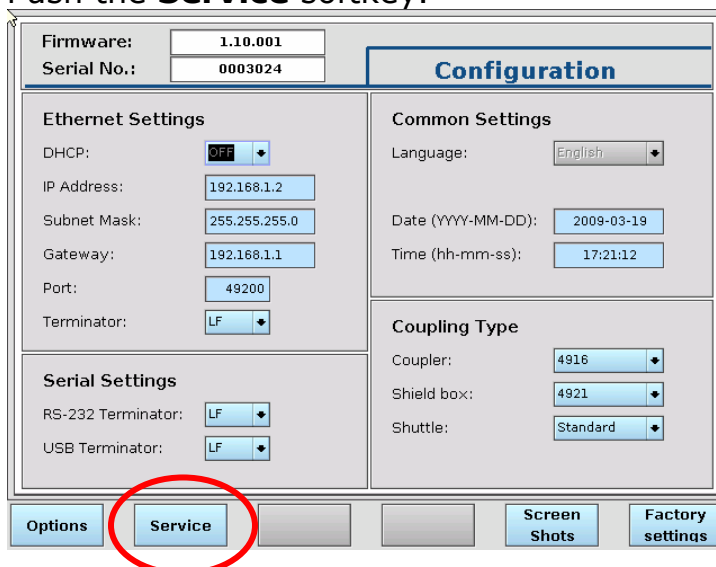
- 11) Continue with section C , the **Patch installation for version 1.10.001 or higher**

C Patch installation for version 1.10.001 or higher

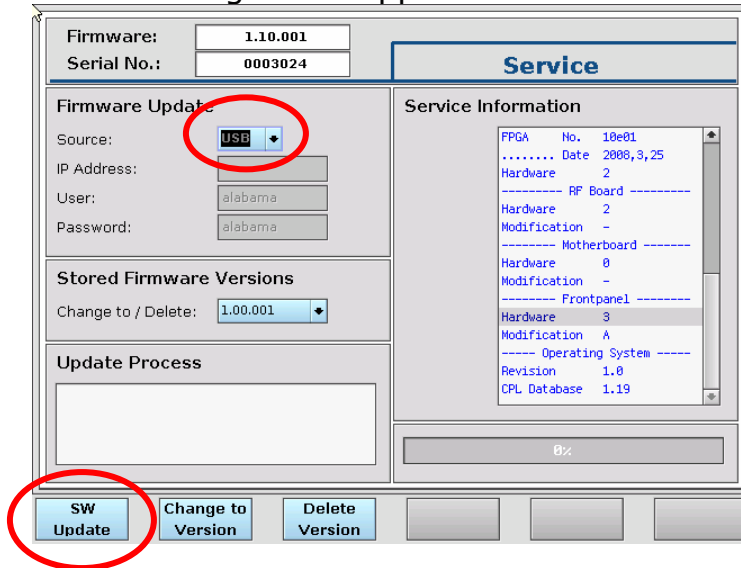
- 1) Download the patch 12 from the Willtek website at <http://www.willtek.com/english/products/tt/2201/download>
- 2) Copy the file **2200patch_012.tar.gz** into the root folder of the USB flash drive.
- 3) Connect the USB flash drive to the 2201 ProLock.
- 4) Push the **Config.** softkey.



- 5) Push the **Service** softkey.

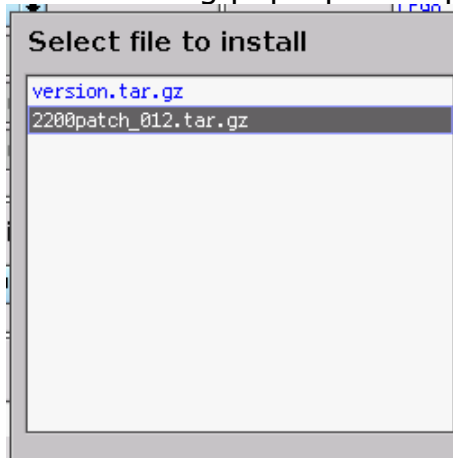


6) The following menu appears:

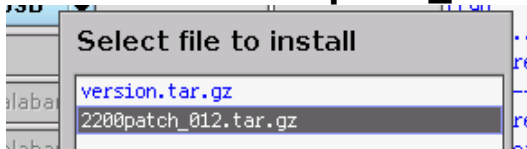


7) Push the **SW Update** softkey.

8) The following pop-up box appears:



9) Select the file **2200patch_012.tar.gz** and push **Install**.



10) WAIT ...

- 11) Once the REBOOT softkey appears, please do **not** push it. Switch the 2201 manually off and on with the power switch on the front panel (left hand side)

